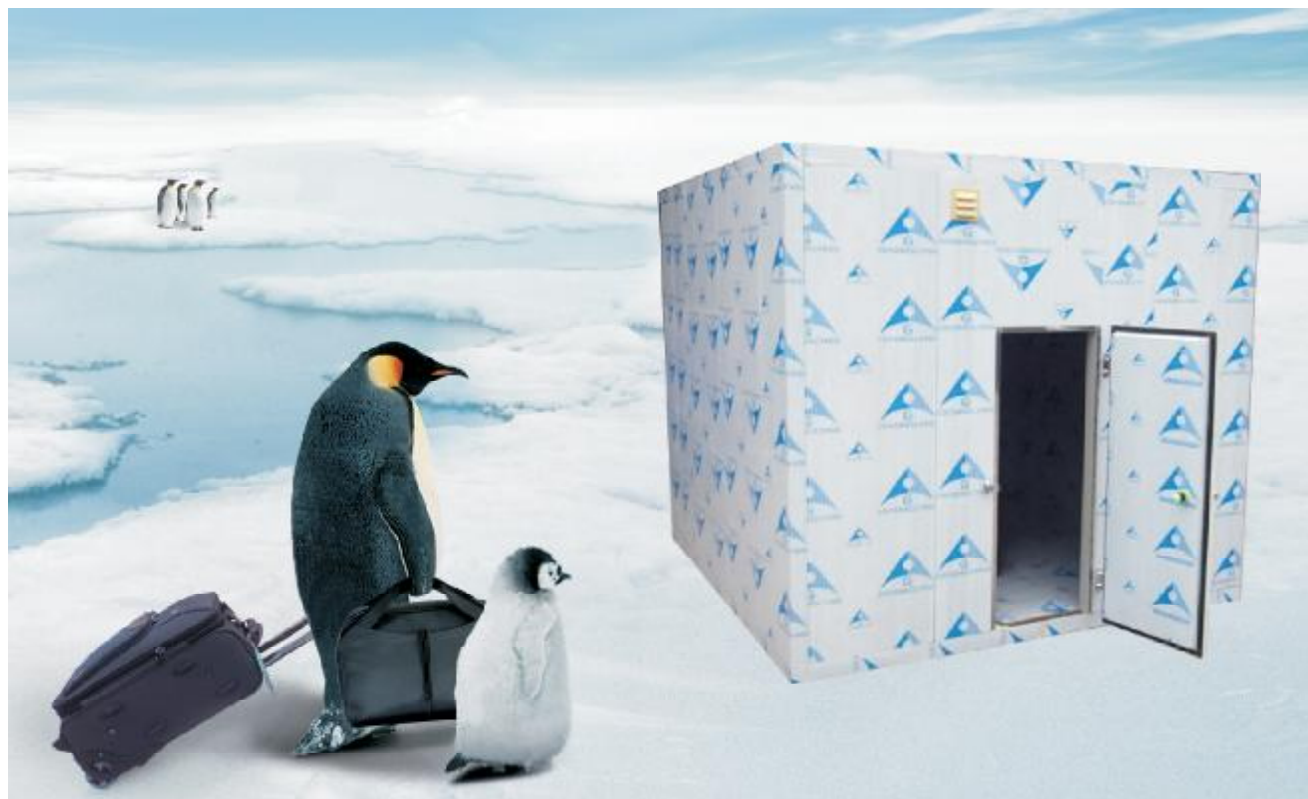




PU Panel



CONTENTS Professional Insulation PU-panel China

Company Profile	02
Polyurethane Insulation Panel Dimension	03
Polyurethane Insulation Panel Thickness	04
Cold Storage	05
Cold Storage Common Data	06
Cold Storage Door & Cold Storage Accessories	07
Refrigeration Unit	09
Engineering Example	11
Combined Cold Storage	13

COMPANY PROFILE

Professional Insulation PU-panel China

Yangtze cooling Ice System Co., Ltd is a professional supplier & exporter which is specialized in developing and exporting PU sandwich panels of cold storage.

Yangtze cooling Ice System Co., Ltd supplies high quality Insulated PU panel at competitive reasonable prices. Approved and have been sold to many countries all over the world with different ambient temperature conditions.

Yangtze cooling Ice System Co., Ltd has been the professional supplier & exporter for cold Room and refrigeration unit, Ice maker. We're working to meet the customers needs and establishing long-term relationships with them.

Our aim to make customers use the smallest cost to buy high quality products.

FACTORY AND WORKSHOP

INTEGRITY AND PRAGMATIC WINNING BY QUALITY



Cold Storage PU-panel

The sandwich board of the library Board used Rigid polyurethane (PU) high pressure foaming, both inside and outside the metal surface layer, the option of color-coated steel plate, embossed aluminum, stainless steel plate and galvanized steel and other materials, PU cold storage is generally modular cold storage, from polyurethane base plate using advanced eccentric rotary combination lock to ensure that the cold intensity.

Characterized as follows: thermal insulation performance, light weight, high strength, corrosion-resistant, anti-aging, beautiful appearance.

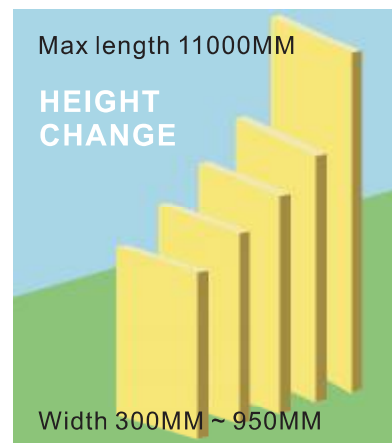
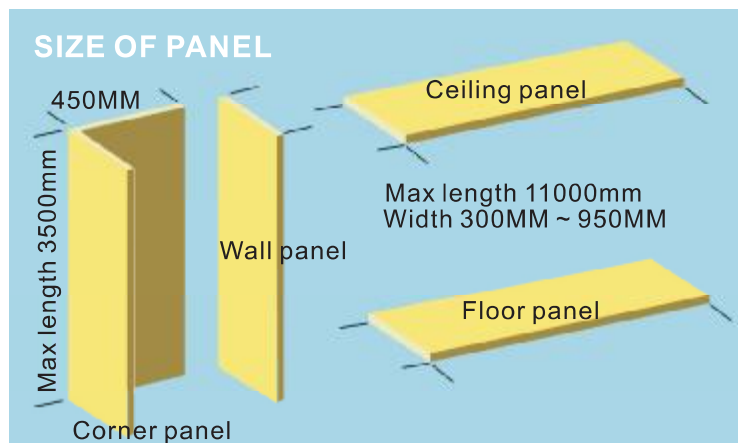


Dimension

Polyurethane Insulation Panel

Cold Storage PU-panel

- Thickness: 75mm, 100mm, 125mm, 150mm, 200mm
- Height: Max length 11000mm
- Width: 300mm~950mm
- Corner panel max length 3500mm, width 450mm

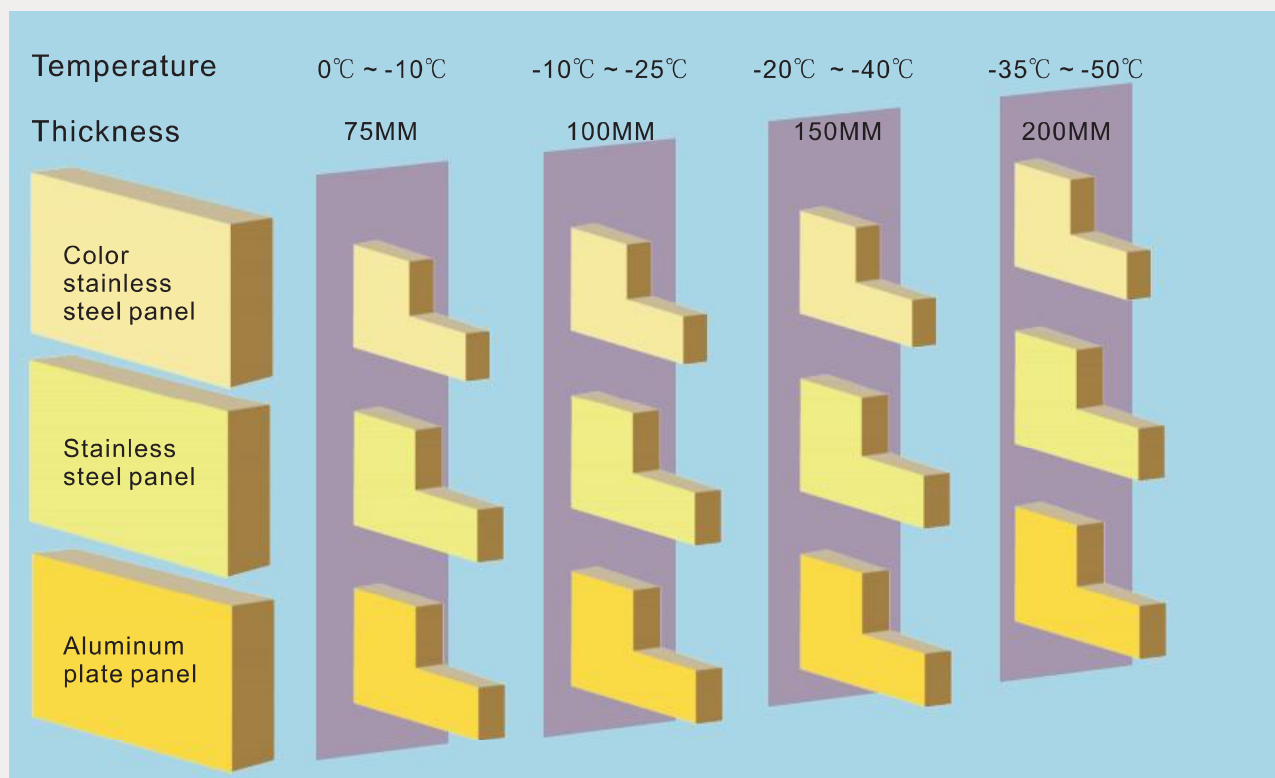


Cold Storage PU-panel

Our products are widely applied in hotels, restaurants, food processing and wholesaling, medicine producing, school and ocean fisher, etc. to store and freeze meat, eggs, water-food, fruits and vegetables, medicine, etc. There are color steel plate, embossing aluminum, zincification plate, stainless steel plate and other kinds of panels, which are artistic and firm, anti-corrosive and durable, high capability of heat insulating.



Thickness Polyurethane Insulation Panel



Cold Storage



Introduction

Cold storage can be divided into the Preservation Library, cold storage, freeze-storage and other non-standard storage four groups according to the functions and inside temperature of the refrigerator.

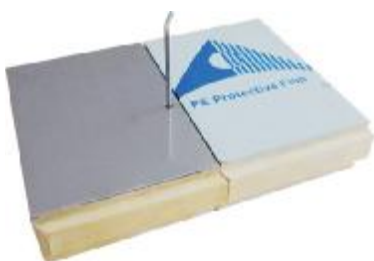
Application of industry: Cold drinks, meat, poultry, aquatic products, hotels, supermarkets, agricultural systems, the pharmaceutical industry, chemical industry, Logistics etc.

The board and wall of storage all made by uniform mould. Assembly and Disassembly convenient when transportation, installation time limit is short for a project, small and medium-sized refrigerator can delivery in 2-5 days, The storage body can be random combination, separation, or increased, reduced based on user's require.

Test Installation of the cold room :In order to guarantee the job location, we can first test to install the cold room in our factory .

Cam Lock Type

Polyurethane insulation PU panel, convex and concave type cam locks pre-burried inside the panels while forming, need to use a hex wrench to lock the panels together, after assemble, need hats to cover the key hole to make the panel surface perfect.



Cold Room

Polyurethane Insulation Panel

Cold Storage Common Data

Polyurethane PU Panel									
Panel thickness (mm)	Density (Kg/M ³)	Thermal conductivity (w/m °C)	Compression strength (mpa)	Water absorption (Kg/m ²)	Automatic shut-up time without fire(s)	Buckling strength (Mpa)	Cold-room Type Capacity(M3)		
							Mini Cold Room	Midium Cold Room	Large Cold Room
75mm	42~45	≤0.022	≥0.2	≤0.03	≤7	≥0.25	<500m ³	500~10000 m ³	>10000m ³
100mm									
125mm									
150mm									
200mm									

Range Of Cold-Room Temperature				
Range of cold-room temperature	Type	M temp(°C)	Low temp(°C)	Frozen(°C)
	Chiller/Freezer Cold-storage	0°C~-2 °C	-18°C~-15°C	-30~-20
Refrigeration,cold-storage	Volume(M ³)	M temp(°C)	Low temp(°C)	Frozen(°C)
	≤100	≤1,5	≤2,5	≤3,5
	101~1000	≤3,5	≤4,5	≤5,0
	>1000	≤4,0 ≤5,0	≤5,5	-
Product Range		Fruits, Vegetables	Meat, Fowl, Seafood	Fresh Meat chicken,seafood ect Freeze process



Cold Storage Door

Introduction

- Adopt temperature: -45℃ - +50℃
- Practical application: Food, industry, supermarket, warehouse, medicine, wholesales
- Door gasket: Built-in magnetic strip, perfect sealing
- Door frame/leas: PPGI steel cover, high injection PU foam, perfect insulation, can choose aluminum, stainless steel sheet and other materials
- Spare parts: Windows, electric film window
- Door lock: Stainless steel

■ Sem-insulation door



■ Manual Sliding Door



■ Auto Sliding Door

Automatic sliding door perfect sealing and insulation Stable running, long usage, Big size.



Cold Storage Accessories



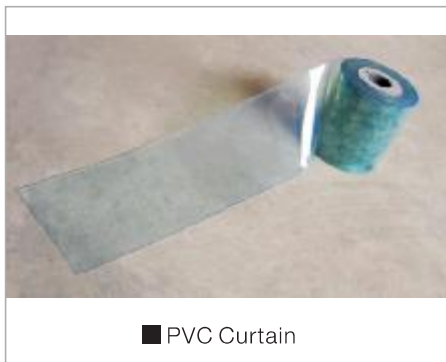
■ Door Hinge & Lock



■ Control Box



■ Danfoss Expansion Valve



■ PVC Curtain



■ Copper Pipe



■ Refrigeration Light Fixture



■ Pressure Relief Vent



■ Insulated Tube

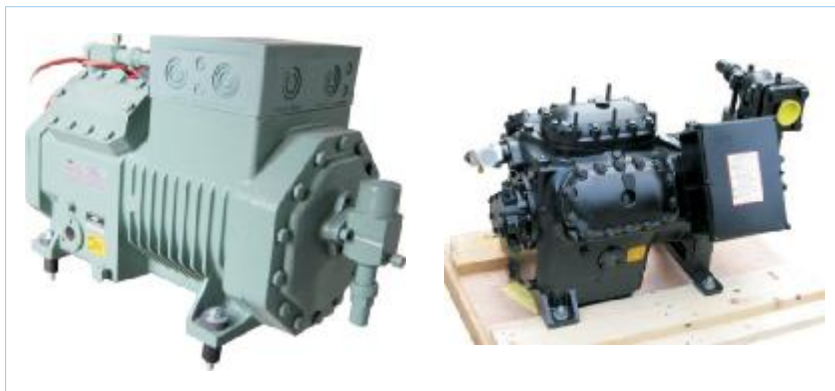


■ R22 Refrigerant

■ R404A Refrigerant

■ RL32H Refrigeration Lubricant

Compressor



Introduction

Semi hermetic Copland or Bizter compressor, crankcase heater, vibration absorber, oil separator, condenser, condenser fan motor, liquid receiver, liquid supply valve, dry filter, sight glass, solenoid valve, pressure controller, oil pressure difference controller, high-low pressure controller, junction box, frame etc.

Evaporator



Introduction

The Evaporator(DD/DJ type) is consist of cooling coil, air circulating fan, Fan guard, defrost controller, electric heater element and a thermostatic expansion valve.



Condensing Unit



Introduction

By exchanging heat with air, the condenser cools the high-temperature, high-pressure gas refrigerant sent from the compressor and condenses it into liquid refrigerant. This heat exchange allows the air conditioning system to emit the heat absorbed by the evaporator from inside to the outside.

Features

- High performance
- The subcooler integrated with the condenser further cools the liquid refrigerant, resulting in increased refrigerant enthalpy and improved evaporator cooling performance
- Thinner tubes and fins improve the heat exchange rate
- Smaller header tank and lower side plate height increase the effective heat exchange area of the core part that exchanges heat, without increasing the installation space
- Small size, light weight and easy installation
- Integrated modulator with condenser tank
- The tube's zinc diffusion layer improves corrosion resistance, resulting in reduced tube plate thickness



Engineering Example



Cold Storage For Large-scale Logistic Center



Food Commerce Center Cold Storage



Vegetables Wholesale Center Cold Storage



Stainless steel cold storage



Cold Storage For Meat Processing Factory



Cold Storage For Product



Philippines Project 1



Philippines Project 2



Philippines Project 3



Maldives Project 1



Maldives Project 2



Maldives Project 3

The Use Of Cold Storage



ENGINEERING EXAMPLE

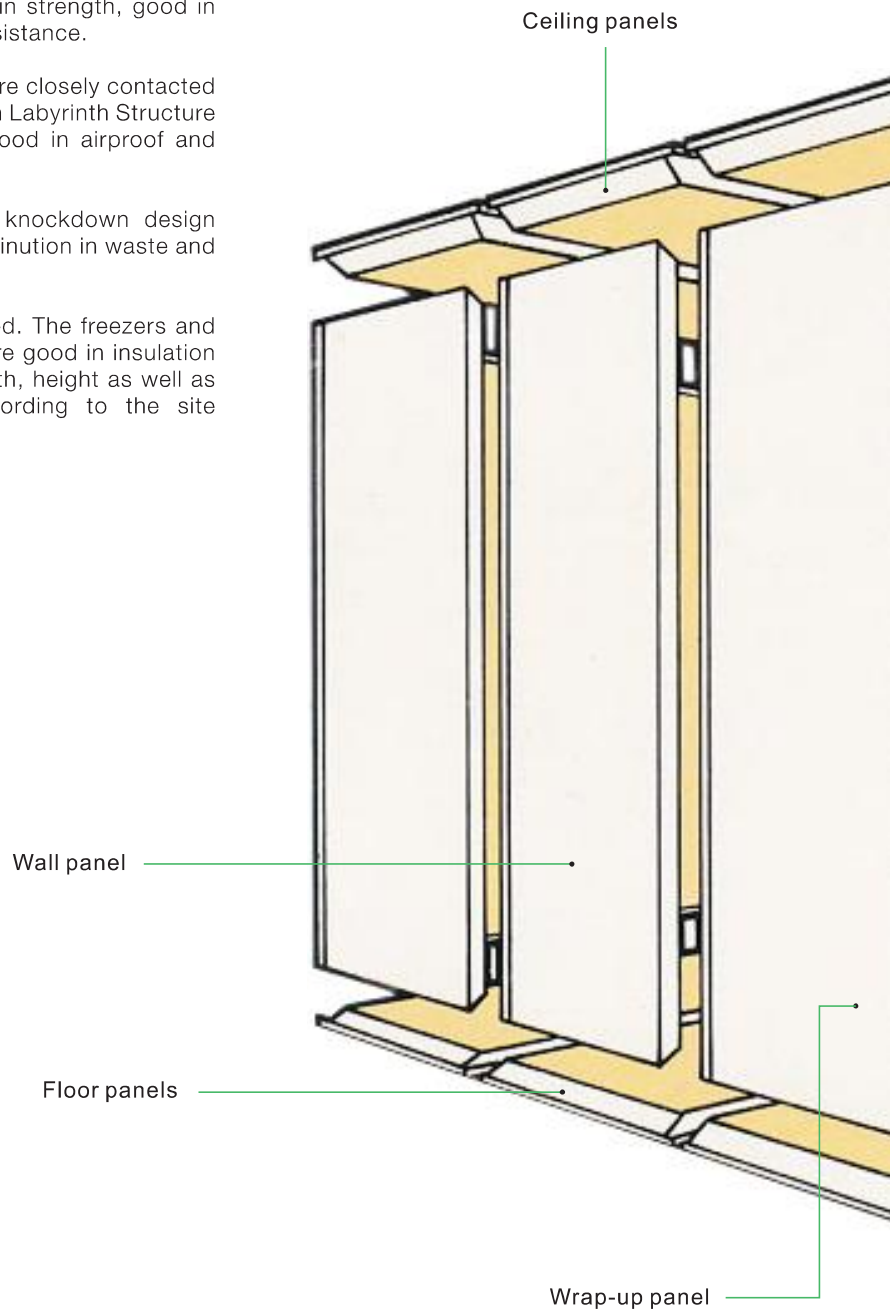


THE USE OF COLD STORAGE		
Cold Storage types	Cold Storage Temperature	Cold Storage Uses
Preservation Library	5°C ~ -5°C	Fruits,vegetables,flowers,dairy products,alcohol,chocolate,rice wine,fresh eggs,fresh meat and so on
Cold storage	-10°C ~ -20°C	Frozen fish,frozen meat,frozen poultry,frozen eggs and so on
Freezer storage	-20°C ~ -35°C	Fish,fresh and freeze rice products,ice cream,blood products,chemical raw materials and so on such as low-temperature storage
Other non-standard cold storage	10°C ~ -60°C	Electronics,metallurgy,bio-pharmaceutical,chemical,automotive building materials industries such as aerospace industrial test ultra-low temperature freezer cold treatment

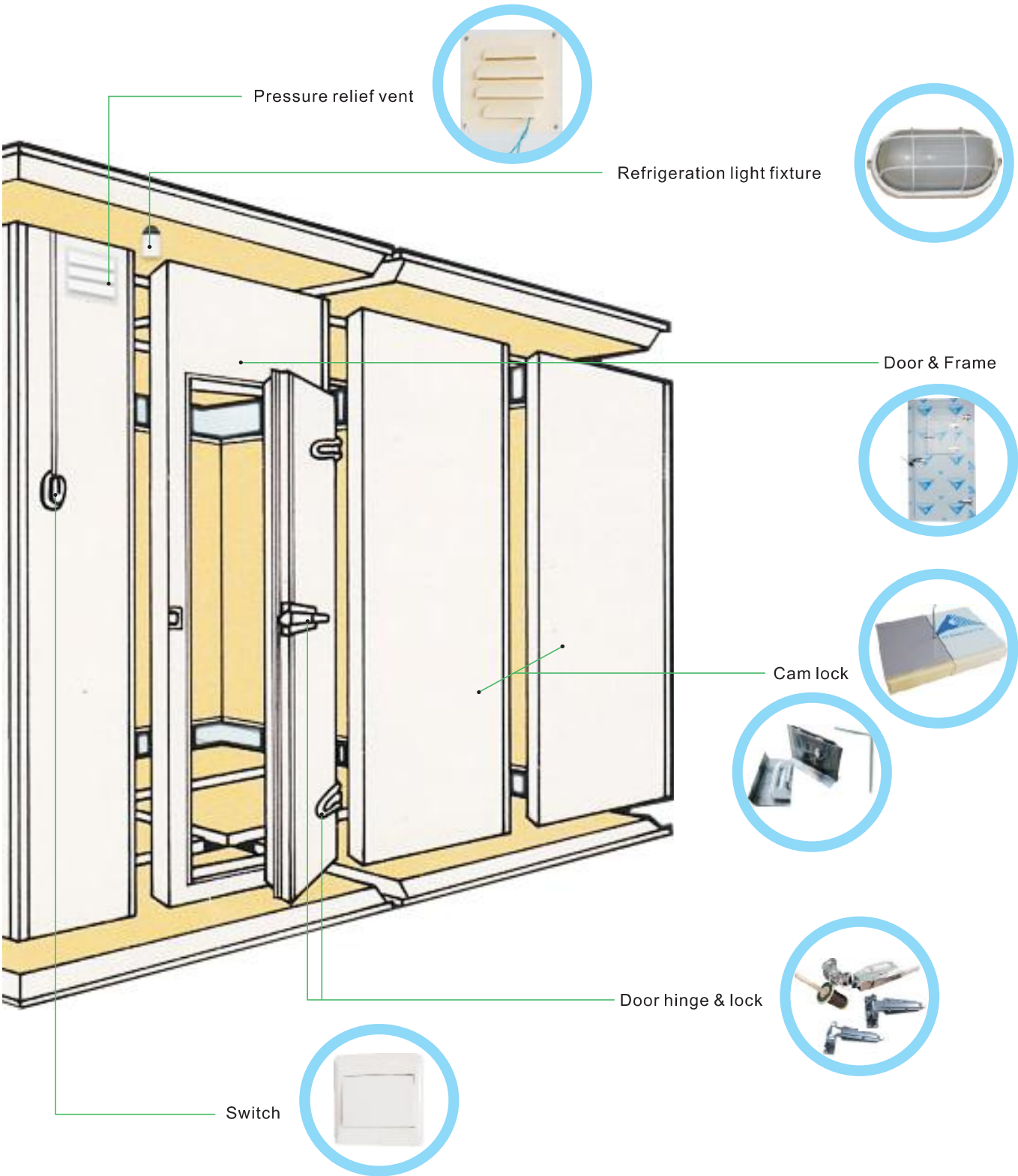
Combined Cold Storage

Features of Combined Cold Storage :

1. Produced with imported production line from Italy, with foam good in density, insulation, heat shielding and energy-saving.
2. Simple in structure, nice in molding, high in strength, good in stability, earthquake resistance and erosion resistance.
3. The core materials of cold storage panels are closely contacted with each other. Large panels are connected in Labyrinth Structure and there is no gap in the joint, which is good in airproof and insulation.
4. The Eccentrically-hooked Structure and knockdown design makes it convenient in installation on site, diminution in waste and short in construction period.
5. The cold storage panels can be customized. The freezers and cold storage rooms are using panels which are good in insulation and application property, and the length, width, height as well as surface materials can be customized according to the site situations.
6. High in quality and stability.



Installation Of Cold Storage





YANGTZE COOLING ICE SYSTEM CO., LIMITED

Tel: 0086-757-81019142 Fax: 0086-757-81019143

Website: www.yangtze cool.com

Email: sales@yangtze cool.com

Address:

No.322, Elevator 4, Building 7, Poly Canal Plaza, NO. 20 Denghu Western Street,
Guicheng, Nanhai, Foshan City, Guangdong Province, China